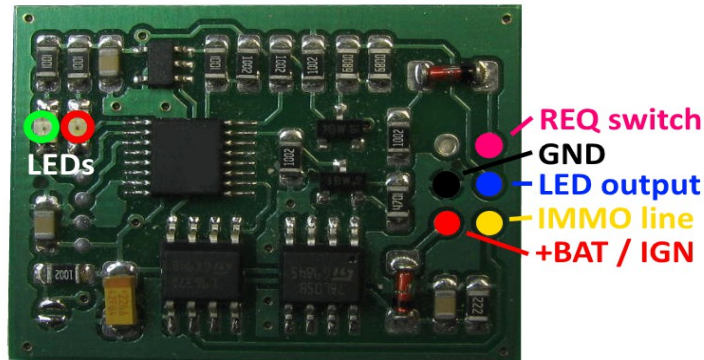


Yamaha IMMO emulator

new systems, 2017 - up

Features:

- NEW systems covered;
- Plug & Play, no alignment necessary;
- can personalize factory new (virgin) ECU.



Connections - OPTION 1:

- **+BAT/IGN** – to IGN_ON/RUN
- **GND**,
- **IMMO line**.

Emulator is active for 3 seconds from power-up.

Connections - OPTION 2:

- **+BAT/IGN** – to +AKB (battery), permanent power;
- **GND**,
- **IMMO line**,
- **REQ switch** (actually pushbutton to GND)

Emulator is always powered-on (SLEEP mode, 2..3 mA power consumption), active for 3 seconds after REQ input goes LOW.

LED output is optional in both cases (active: LOW).

LEDs on emulator board:

- **RED LED:**
 - ON at startup / wake-up,
 - 8 blinks (GRN LED off!) - authorization fail (no ECU / wrong ECU type / ECU already authorized),
- **GRN LED:** goes ON if ECU authorized;
- **LED output:**
 - ON at startup make-up,
 - goes OFF if ECU authorized,
 - 4 blinks – authorization fail.
- All **LEDs** must go OFF if emulator is not active (SLEEP mode).