



VPW logger

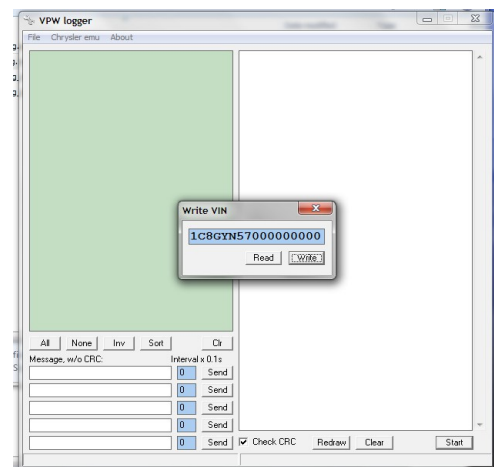
J1850

Purpose:

J1850 VPW data logger for GM / Chrysler cars (diagnostics via pin 2 on OBD connector).

Software:

- supports 1-byte ID
- 5x Tx buffers (single shot or continuous Tx), automatic CRC calculation
- Rx filtering by message ID
- CRC check for received messages,
- File save / load, for further analysis.



API, you can write your own interface:

- **COM port settings:** 115200 baud, 8 data bits, parity: NONE, 2 stop bits, LSB first.
- **To receive frame:** each valid frame from VPW bus is transmitted to PC. No additional commands necessary.
 - Message format is: **5L dd dd dd .. dd CS** where L - dd byte count, CS - sum of all bytes.
 - EXAMPLE: vpw frame **11 22 33** is sent to PC in form of **53 11 22 33 B9**
- **To transmit frame:** two options possible, with or without CRC.
 - w/o CRC: **CL dd dd .. dd CS** (L – vpw frame length (dd dd ... dd), CS – sum of all bytes), L<=12;
 - with CRC: **DL dd dd .. dd CS** , L<=11 because last byte (CRC) is added by hardware;
 - EXAMPLES:
 - **C3 11 22 33 29** produces vpw message **11 22 33**
 - **D3 11 22 33 39** produces vpw message **11 22 33 CRC** - 4th byte added, CRC

