



## PORSCHE 997 (I) immo emulator, CAN

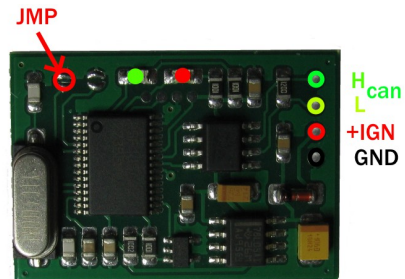
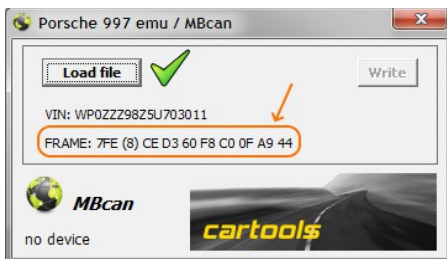
911 / Boxster / Cayman, 2004...2012 MY

### Purpose:

For Porsche cars, project 997 1<sup>st</sup> gen, immo via CAN (cartronic), VIM234 / VIM235 / VIM236, from 2004 and up to 2012. Supported engine Control Units: ME 7.8.x: Bosch 0 261 208 300 or similar. Programming is necessary, emulator is NOT Plug&Play.

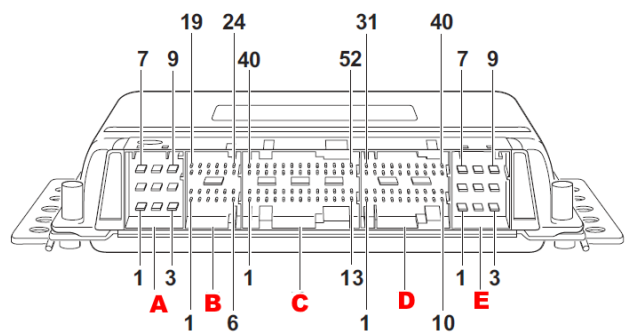
### Preparation:

- Install emulator into ECU, emulator must be in configuration mode (**JMP** is open), attach logger or MBcan, switch power ON.
- Launch configurator software, load ECU dump (95320 EEPROM). If dump is valid, you will see VIN number and CAN frame necessary for emulator configuration.
- Using MBcan you can send this frame directly from configurator software. Or use any CAN logger instead (500kb, 11-bit ID). If frame accepted, emulator must respond with **77F (2) 4F 4B** – ascii OK. Both LEDs on emulator board must go on for 1 sec.
- Now wait some seconds while emulator reads all necessary information from ECU.
- Switch IGN OFF, wait until main relay releases, switch IGN ON. If everything is OK both LEDs will go on at power on (short blink), then **GRN LED** must remain on for 1 second (ECU authorization request received).
- If car starts, place solder joint (short **JMP**) to avoid further emulator updates by accident.



### Connections:

- A1: IGN ON (terminal "15")
- A4, A5, A6: GND
- D36: CAN Hi
- D37: CAN Lo



### LEDs on emulator board:

- at startup: **GRN** and **RED** both goes on for 0.2 sec
- if **RED** blinks 4x after startup – emulator is not programmed or contains insufficient data,
- **GRN** must go on for 1 sec when valid authorization request from ECU received (although it doesn't mean ECU is authorized – must check status via diagnostic tool if in trouble).
- **RED** and **GRN** both together on for 1 sec: configuration mode – new data received.

